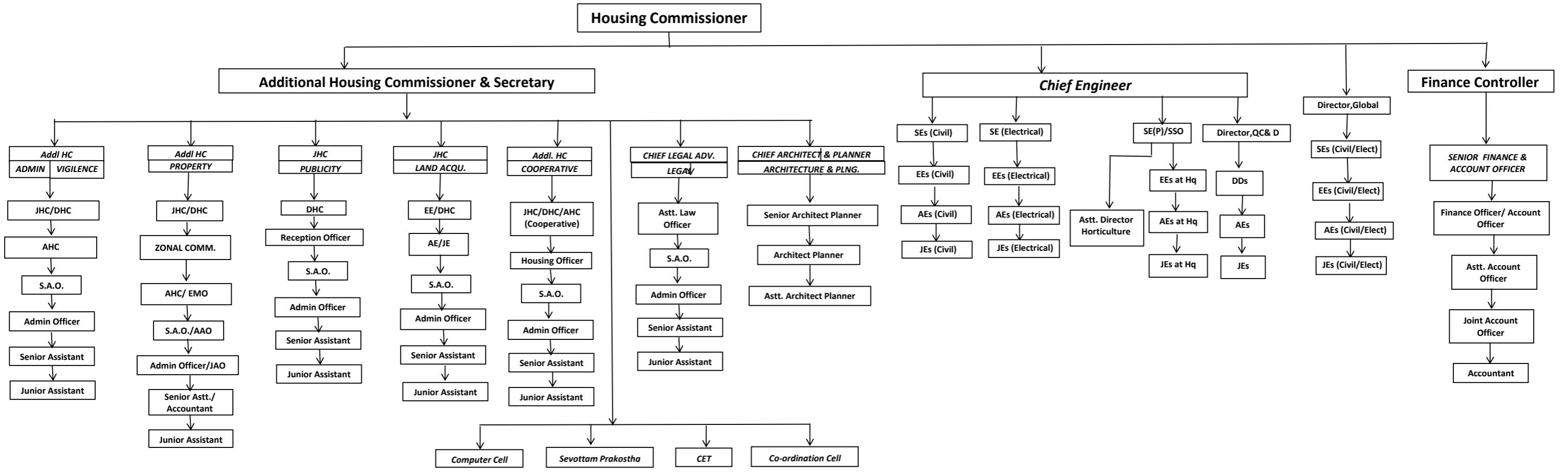


ADMINISTRATIVE STRUCTURE
UTTAR PRADESH HOUSING & DEVELOPMENT BOARD



Circles= 16
 Const. Divisions=45
 Electrical Divisions-03
 Quality & Design Div-04
 Centre for Excellence & Training-01

Global Cell-01
 Property Zone offices-07
 Property EMO offices=53

Addl HC=Additional Housing Commissioner; JHC=Joint Housing Commissioner; DHC=Deputy Housing Commissioner; AHC=Assistant Housing Commissioner; SE=Superintending Engineer; EE=Executive Engineer; AE=Assistant Engineer;
 JE=Junior Engineer; S.A.O.=Senior Administrative Officer; EMO=Estate Management Officer; AAO=Assistant Account Officer; JAO=Junior Account Officer; CET=Center for Excellence & Training; Elect=Eletrical; QC& D= Quality Control & Design